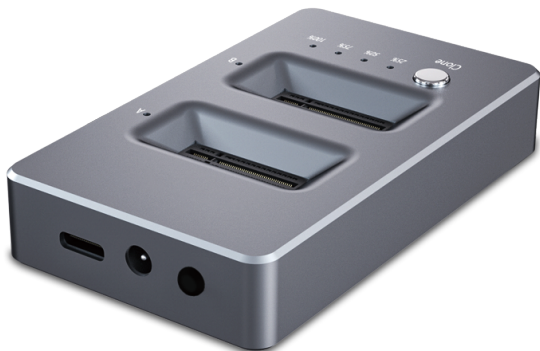


ACASIS

Dual NVME M.2 SSDs Docking Station



Model:M03
User Manual

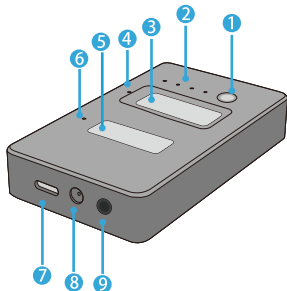
Thank you for choosing Acasis.

Please read the manual before you use this product.

Product features

- Compatible with Nvme M.2 SSDs.
NOT COMPATIBLE with regular M.2 SATA / AHCI SSDs.
- Support SSDs size: 2230, 2242, 2260, 2280.
- Read from and write to both SSDs simultaneously.
- Offline cloning function: clone the drive without using a computer.
- Full aluminum construction for maximum heat dissipation.
- Support data transmission speeds of up to 10Gbps.
- 100% tool-free design.

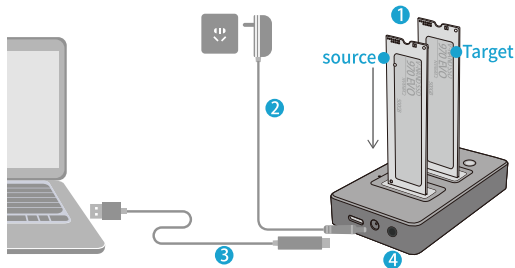
- 1 Clone button
- 2 Clone process indicator LED
- 3 Target SSD slot
- 4 Work indicator LED
- 5 Source SSD slot
- 6 Work indicator LED
- 7 Type-c interface
- 8 Power interface
- 9 Power button



Package Contents

- Dual NVME M.2 SSDs Docking Station
- Type-C to USB 3.0 cable
- Type-C to type C cable
- Power adapter
- User Manual

Connect and install instruction

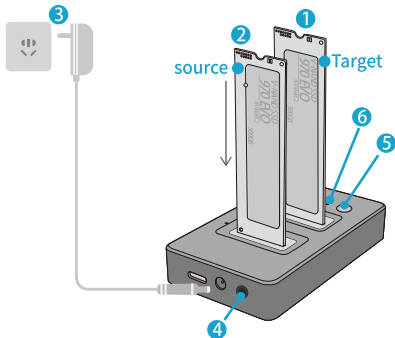


- 1 Plug the SSDs into the slot.
- 2 Connect the power adapter.
- 3 Connect the USB cable with the computer.
- 4 Press the power button and start to use.

Please Note for cloning function:

The capacity of your Target SSD must be equal or more than the capacity of your Source SSD.

Off-line cloning operation instruction



Notice: Please Note the capacity of your Target SSD must be equal or more than the capacity of your Source SSD.

- 1 Insert your target SSD in slot.
- 2 Insert the source SSD in slot.
- 3 Connect with the power adapter.
- 4 Press the power button.
- 5 Keep pressing the clone button three seconds until the LED indicator begins to flash.
- 6 The LED indicator shows the copy process (25%-50%-75%-100%), when all the LED lights on means the data copy has been finished

Off-line cloning operation instruction

After cloning - the target drive may not appear

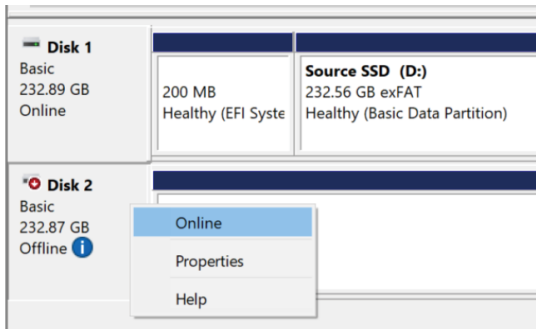
Depending on your operating system, your newly cloned drive may not show up at all. As you can see in the example below, after successfully completing the cloning process, the only drive available is source drive and the target drive cannot be found under this PC.

This happens because there is a signature conflict between the drives after the drives are cloned. As a result, the target drive is offline.

* Disk 2 Basic 1863.00 GB			
	529 MB	99 MB	953.24 GB
	Offline (The disk is offline because it has a signature collision with another disk that is online)		

To fix this on Windows (7 and above), follow these steps:

- 1) First, right click This PC, then click Manage->Computer Management->Storage-> Disk Management
- 2) Once in Disk Management, right click the offline drive to open the context menu and click Online.



Technical Support Email: support@acasis.com

www.acasis.com

