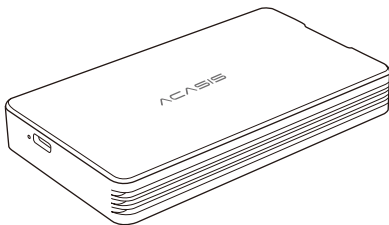




USB4.0 NVMe M2 SSD ENCLOSURE

PCIe M key, B&MKey



TBU401

User Manual

ACASIS USB4.0 NVMe M.2 SSD ENCLOSURE combines thunderbolt3 speed with wide compatibility of USB.

Feature

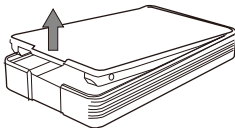
- Compatible with SSD size: 80mm(2280)
- Support Protocol: PCIe NVMe
- Support SSD: M key, B&MKey
- Interface: Type-C
- Transmission speed: USB4.0 40Gbps / USB3.2 / USB3.1
USB3.0
Compatible Thunderbolt3/4
- System Requirements: Windows 7/8/10
Linux, Mac OS 10.3 or higher
- Size:100*61*14.5mm
- Material: Aluminum Alloy, maximum heat dissipation
- Plug and Play, no drivers needed.
- Tool free.

Package contents:

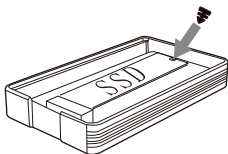
- 1X USB 4.0 NVMe M.2 SSD ENCLOSURE
- 1X Thunderbolt 3 Cable
- 2X Rubber Stoppers
- 2X Thermal Pads
- 1X User Manual

Tool-free Installation Instructions

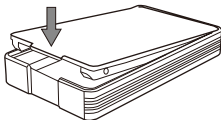
1. Remove the bottom plate.



2. Slide in your SSD until it is properly seated. Then use rubber stopper to fix your SSD.



3. Reattach bottom plate.



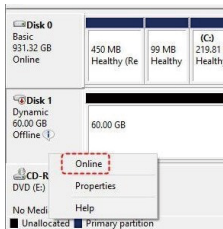
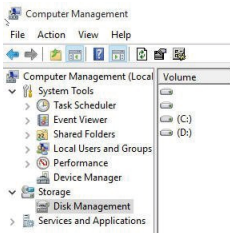
Troubleshooting

1. Device Is Not Recognized Properly

- 1) For thunderbolt interface and Windows PCs, if this is a new device used for the first time, you might have to approve the device.
Select "Always Connect".
- 2) Use the Thunderbolt3 cable that is included in the package, or try your own Thunderbolt3/USB cable, to exclude any problems with the cable.
- 3) Try to disconnect and re-connect the Thunderbolt/USB cable and/or restart the computer.
- 4) For thunderbolt interface and Windows PCs, update the Thunderbolt driver/firmware on your computer.

2. Drive Is Connected But Missing In File Explorer

Open Computer Management->Storage Disk Management->right-click on the disk Offline, then click Online

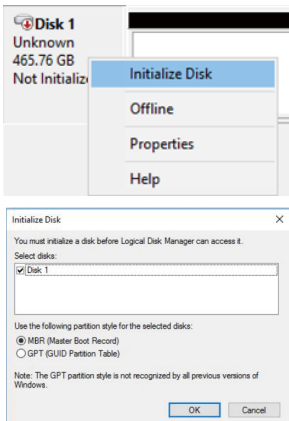


3. Using A Brand New Hard Drive

If you are using a brand new HDD, you might have to initialize it before you can use it.

NOTE: Only initialize a disk if you are absolutely sure it is a brand new disk and it does not have any of your data on it.

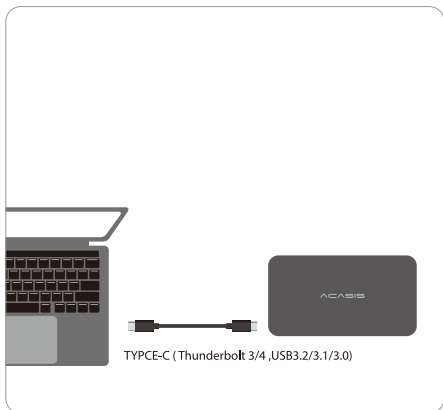
Open Computer Management->Storage Disk Management->right-click the disk you want to initialize, and then click Initialize Disk,make sure that the correct disk is selected.



For additional troubleshooting, please contact

Technical Support Team: support@acasis.com

ACASIS USB4.0 NVMe M.2 SSD ENCLOSURE combines thunderbolt3 speed with wide compatibility of USB.



ACASIS INC. Co.,Ltd

Support Email: support@acasis.com

Website: www.acasis.com

Thunderbolt and all other brands and logos belong to their corresponding owners.